

B.RO T12W

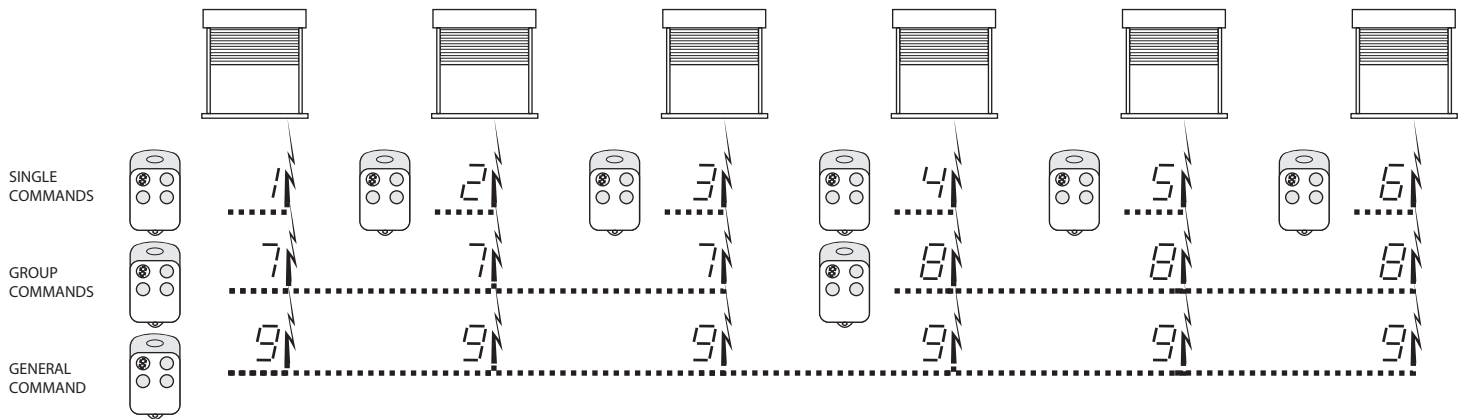
12-Channel Rolling-Code Transmitter with Display for Blinds

DESCRIPTION

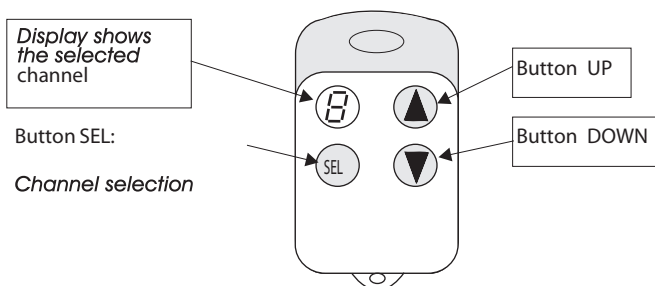
B.ro T12W is a 12-channel transmitter, frequency 433.92 MHz, controlled by means of a SAW resonator, with a Birol® variable coding system. This coding system offers over 18 billion possible combinations, thus guaranteeing safety, immunity from any type of interference and prevention of undesired operation.

Combined with the control units from the BLIND RAPID range, it is possible to obtain a system which is easy to install and use, designed for greater domestic comfort: with a single transmitter it is possible to individually control up to 12 different blinds, or up to 12 different sets of blinds.

EXAMPLE OF EMPLOYMENT FOR BLINDS (RAPID Range)



As you can see from the example, the six blinds are individually controlled by the transmitter channels ranging from 1 to 6 (individual controls), channels 7 and 8 control a set of three blinds each (for instance those belonging to the same room), and channel 9 controls all of the six blinds (general control). Each user is free to arrange the combination between channel and blind or set of blinds to be controlled, and this combination is achieved through the LEARNING operations (also refer to the instructions relating to the receiver in the section "Transmitter Learning").



OPERATING MODE

- By pressing SEL, the display switches on and shows the last selected channel. After a standing period of approximately 4 seconds the display switches off.
- In order to select a new channel, press the SEL key several times or keep it pressed until it shows the desired channel.
- The channels available for selection are 12, plus a fictitious one which is exclusively meant for the deletion function (d - delete):

. 1 2 3 4 5 6 7 8 9 a b c d

- Once the channel is selected, press the UP or the DOWN key to activate the shutter. The UP key operates the blind opening, the DOWN key operates its closing.
- During transmission, the number of the selected channel disappears and the led blinks for 2 seconds (minimum transmission-time). Then, the channel is shown again for a while.
- Keeping pressed the keys UP and DOWN for more than 2 seconds, the transmitter will keep on transmitting the same impulse.

HIDDEN KEY

This transmitter is not furnished with a hidden key as the traditional B.RO1-2-4WN 1-2-4 key transmitters. By means of a B.RO T12W transmitter having at least one previously stored (learnt) channel in the control unit, it is possible to set up the RAPID for the storage of new transmitters (memory opening). The sequence is the following:
Select the previously stored channel of the transmitter.
Keep both the UP and DOWN keys pressed at the same time for at least 3 seconds. The RAPID control unit signals activation of the learning mode with a specially provided intermittent sound signal.

INSTALLATION AND LEARNING

In order to activate the transmitter, it is necessary to carry out the learning procedure for that transmitter on the receiver. To this end, it is useful to make a note of the scheme relating to the combination of the transmitter channel to the blind or to the set of blinds to be controlled. The operating sequence required to carry out the channel learning procedure on the memory of the RAPID control unit is the following:

- If the memory of the RAPID control unit is empty (starting condition), the control unit automatically enters the learning mode when powered. Otherwise (if other transmitters have already been learnt) enter the learning mode by means of the methods provided for:
- Hidden key of a 1-2-4 key transmitter already previously learnt.
- Learning key of the RAPID control unit.
- Key combination of the B.RO T12W transmitter, carried out on a previously learnt channel (please refer to the section "Hidden Key").
- The RAPID control unit signals activation of the learning mode with a specially provided intermittent sound signal.
- Put the B.RO T12W transmitter in the SELECTION mode (flashing display).
- Select the channel of the B.RO T12W transmitter which you wish to store.
- Put the transmitter in the TRANSMISSION mode (fixed display).
- Bring the transmitter close to the receiving antenna of the RAPID until they touch each other.
- Press the Up key or the Down key until the buzzer of the RAPID control unit signals, by means of a prolonged double beep followed by two short beeps, that the learning operation has been successfully completed (with this operation, both the UP key and the DOWN key of the selected channel are learnt).

DELETION OF A TRANSMITTER

This function makes it possible to easily remove from the RAPID memory a previously learnt transmitter. This operation may prove necessary in several different circumstances: for instance in the event of an application mistake, or following an installation configuration change, etc.

The deletion procedure is the following:

- Ensure that the blinds are closed and that the RAPID control unit is working in the "enabled transmitters" mode (at least one jumper on);
- Open the memory of the control unit by following the procedure described in the section "Hidden Key" and employ for the purpose the transmitter to be deleted;
- Bring the transmitter close to the antenna until they touch each other;
- Select the deletion channel "d" (delete) in order that the display remains switched on continuously;
- Keep the UP key (or the DOWN key) pressed for at least 3 seconds: once the transmitter is deleted from the memory, the RAPID buzzer sounds 4 short beeps followed by 2 more short beeps.

DELETION OF ALL TRANSMITTERS

This function enables deletion, by means of a previously stored transmitter, of all stored transmitters in a RAPID control unit.

- Ensure that the blind is closed and that the control unit is working in the "enabled transmitters" mode (at least one jumper on);
- Select, on the transmitter, a stored channel;
- Bring the transmitter close to the antenna of the control unit whose memory you wish to clear, until they touch each other;
- Press both the UP and DOWN keys of the transmitter at the same time and keep them pressed for at least 5 seconds (the RAPID enters the learning mode).
- Once deletion is complete, the RAPID buzzer sounds 6 close short beeps after which (in empty memory conditions) it automatically enters the learning mode, and it remains in this mode until a transmitter is learnt.

PLEASE NOTE

We would like to draw your attention to the fact this technical instruction has been written using the B.RO T12W with a control unit from the RAPID series. We would not recommend to use the RAPID unit with setting for "Venetian" blinds. The B.RO T12W can be used with other control units of the Birol® series for different applications.

ATTENTION

For using the 12-channel transmitter with receivers, these must have the version of the software compatible with it, that is: B,RO 12 and B.RO 22

DIRECTIONS AND WARNINGS

- The existence of metal parts or of damp walls may significantly reduce the range of the system.
- As a rule, one should avoid, if possible, to install transmitters and receivers close to large metal articles or near the ground and on the floor.
- A remote control which does not provide for visual monitoring of operation accomplishment may result in risks depending on the employment mode. It is therefore wise to evaluate the consequences of incorrect use, and minimise the opportunities for its occurrence.
- Should a long standing period be foreseen for the transmitter, we recommend you remove the battery in order to safeguard its charge. In any event, replace the battery every 6-12 months, depending on use.
- This device is designed for equipment such as door openers, gate openers, blind openers; for use in other sectors, the user should ascertain whether operating licenses are required from the body appointed by the State.

TECHNICAL FEATURES

SUPPLY	12V
TYPE OF BATTERY	Alcaline battery type 23A
ABSORPTION	18mA (max) in transmission 6mA (max) when display is on 5µA (max) stand-by
N° OF AVAILABLE CODES	18 billions
N° OF AVAILABLE CHANNELS	12 + 12 (12 up and 12 down)
ANTENNA	Incorporated loop
OSCILLATOR TYPE	Controlled by SAW
FREQUENCY	433,92MHz +/-75KHz
WORKING TEMPERATURE	0°C ... 55°C

GUARANTEE - In compliance with legislation, the manufacturer's guarantee is valid from the date stamped on the product and is restricted to the repair free replacement of the parts accepted by the manufacturer as being defective due to poor quality materials or manufacturing defects. The guarantee does not cover damage or defects caused by external agents, faulty maintenance, overloading, natural wear and tear, choice of incorrect product, assembly errors, or any other cause not imputable to the manufacturer. Products that have been misused will not be guaranteed or repaired. Printed specifications are only indicative. The manufacturer does not accept any responsibility for range reductions or malfunctions caused by environmental interference. The manufacturer's responsibility for damage caused to persons resulting from accidents of any nature caused by our defective products, are only those responsibilities that come under Italian law.